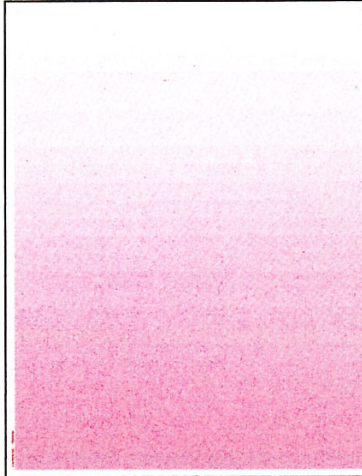


## **STOCK LASER CUT SHEET FORMS**

Add some color to your forms. This is a great economical way to add some security and enhance your dealership image.

**LZR-RED**



**LZR-BLUE**

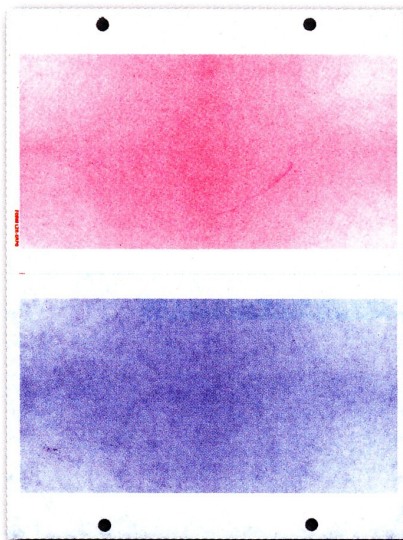


8 1/2" x 11", 20 # laser forms printed with either a red or blue graduated screen. Packaged 250 sheets per pack and 2,500 sheets per case.

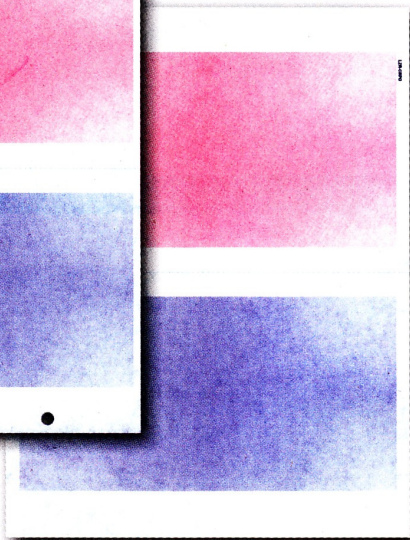
**1 Case (2500 sheets) \$81.00**  
**5+ Cases \$69.00 each**

## **DOUBLE COLOR STOCK LASER CUT SHEET FORMS WITH CENTER PERFORATION**

**LZR-CRPO-WH**



**LZR-CRPO-NH**



8 1/2" X 11", 20# laser forms printed in 2 color with red on side and blue on the other. With or without hole punches. Normally used for either cash receipts, purchase orders, or parts invoices. Packaged 250 sheets per pack and 2,500 sheets per case.

**1 Case (2500 sheets) \$105.00**  
**5+ Cases \$90.00**